

# Vista Manager EX

## Network Monitoring and Management



## VISTA MANAGER™ EX

Vista Manager EX delivers state-of-the-art monitoring and management for Autonomous Management Framework™ Plus (AMF Plus) wired, Autonomous Wave Control (AT-AWC™) wireless, and third party endpoint devices. The health monitoring dashboard provides at-a-glance network status, while the Software Defined WAN (SD WAN) orchestrator provides centralized optimization of WAN traffic, for performance-driven management.

### Single-pane-of-glass

The singular interface into the entire network includes the dashboard showing status, details, event information, and a topology map. Critical issues, such as internal security threats, environmental alarms, and more are highlighted on the network map and in the event log—and an integrated Syslog server adds further capabilities for easy resolution. Asset management enables firmware and configuration backup and upgrade of one, many, or all devices. Vista Manager EX brilliantly combines a complete network overview with intuitive access to detailed information.

### AMF Plus features<sup>1</sup>

The AMF Plus features in Vista Manager include a customizable health monitoring dashboard for at-a-glance network status, easy management of LAN traffic using QoS and ACLs, simplified creation of inter-branch VPN connections, security management, and more.

### Secure SD-WAN

The SD-WAN orchestrator centralizes management of inter-branch connections for secure reliable application delivery. Automatically optimize the performance of real-time applications for business productivity, and use the map, dashboard, and health pages to monitor SD-WAN operation.

### Real-time maps

#### Integrated topology map

View all wired and wireless network devices, with easy access to the GUI of any node for specific control—and also see connected endpoint devices, with details readily available. The map is automatically created, and devices can be grouped to show branch and building layout, with sites able to be collapsed or expanded for simplicity and scalability.

#### Device discovery and security<sup>1</sup>

AMF Plus device discovery works seamlessly with optional Vista Manager plugins Nozomi Guardian, Forescout Continuum, and Microsoft InTune. Discovered endpoints like printers, servers, sensors, and more, are shown on the map and in asset management. Nozomi and InTune endpoint security alerts are also displayed.

#### Traffic monitoring view

The color-coded traffic map provides visual bandwidth utilization across all links, while advanced options use sFlow and deep packet inspection (DPI) to show protocols and top used applications. Live and historical views enable analyzing traffic, protocol, and application use to improve performance.

### VLAN view

Simplify management by creating and editing VLANs across multiple switches at once with a few mouse clicks, while the color-coded VLAN map highlights network connectivity.

### SD-WAN map

Visualize inter-branch VPN connections, with color-coded status and performance information for monitoring and proactive management.

### Multi-network support

Support multiple tenants, as each network is kept separate. Allow full administration or read-only access to any network or part network.

### Network automation

Powerful features like automatic backup, upgrade and configuration simplify management. Automated device recovery enables zero-touch replacement. AMF Plus and Vista Manager EX combine to reduce network administration.

### AI assistance

Our AI network assistant is available as a trial feature in Vista Labs, and provides guidance on network configuration and features.



### Plug-ins for additional functionality

Add capability with subscription based plug-ins.

#### AWC plug-in

Manage and monitor APs, with floor maps, wireless coverage heat maps, and client counts. AWC automatically optimizes AP output and channel for a superior user experience. Innovative Channel Blanket hybrid wireless provides a network with both high throughput and seamless roaming, while AWC Smart Connect enables simplified deployment, and a resilient solution using wireless uplink connectivity.

#### SNMP plug-in

Discover and manage devices with the Simple Network Management Protocol (SNMP) plug-in. Use the view you prefer, while notifications and alerts support proactive management.

#### AT-RADgate RADIUS server plug-in

Allied Telesis RADIUS server application (AT-RADgate) enables user authentication and network access control. As a Vista Manager plug-in, user and endpoint information is seamlessly integrated for centralized management in line with business security policies.

<sup>1</sup> Device discovery and other AMF Plus intent-based features are not supported on multi-tenant networks

## KEY FEATURES

- Manage Allied Telesis switches, firewalls, APs<sup>2</sup>, and endpoint devices
- Automatically-created topology map with grouping of devices into branches or buildings, and expanding or collapsing of sites for scalability
- AMF Plus intent-based features<sup>3</sup>
- Configurable health monitoring for at-a-glance network status, with automated event actions
- Send event notifications to Microsoft Teams or Slack
- High-priority network issues and critical events are highlighted on the map, and in the event log
- SD-WAN inter-branch network optimization
- Automatic wireless output and channel control<sup>2</sup>
- Configure wireless access and security features such as Captive Portal and Passpoint<sup>2</sup>
- AWC Channel Blanket hybrid wireless<sup>4</sup>
- AWC Smart Connect wireless uplinks<sup>4</sup>
- AWC Sky Defender for wireless client filtering<sup>2</sup>
- AMF Plus device discovery, and optional plugins Nozomi Guardian, Forescout Continuum, and Microsoft InTune discover and manage endpoint devices
- Intelligent edge security lets you view endpoints attempting connection, and manually or automatically allow or block access
- Manage user authentication using local or external RADIUS, with the AT-RADGate RADIUS server supported as a plugin
- Real-time traffic, protocol, and application monitoring
- Simplified VLAN creation and management
- Centralized device firmware and config backup, recovery, and upgrade
- Manage AMF Plus device feature licenses
- Add URL bookmarks to the main menu for easy access
- Trial new or experimental features with Vista Labs. For example, our AI network assistant

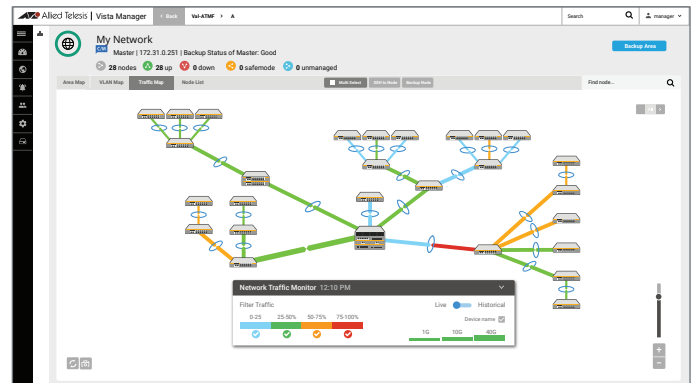
<sup>2</sup> AP management requires AWC plug-in license

<sup>3</sup> Using AMF Plus features requires an AMF Plus Controller or AMF Plus Master AW+ license to be installed on the managed network. (Note that if an AMF Plus, and an old AMF license are both installed, the AMF Plus features will not be available).

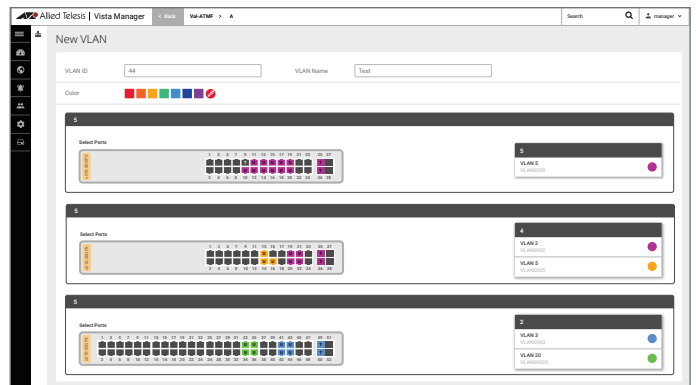
<sup>4</sup> Requires AWC CB-2022 and AWC plug-in license

Network map views enable proactive visual management.

The color-coded traffic view provides real-time visual status of network utilization and bandwidth across all links. sFlow and DPI show protocol and application use in the network:

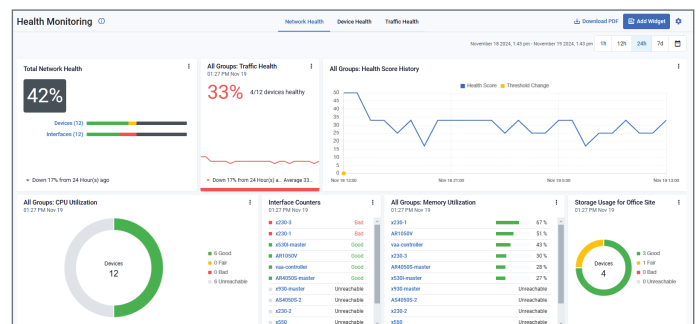


In the VLAN view, simplify network management by creating VLANs across multiple switches with a few mouse clicks:



Deal proactively with issues through the Health Monitoring dashboard. Use automated event actions to alert administrators of any issues via the network map, an email, or a notification sent to Microsoft Teams or Slack.

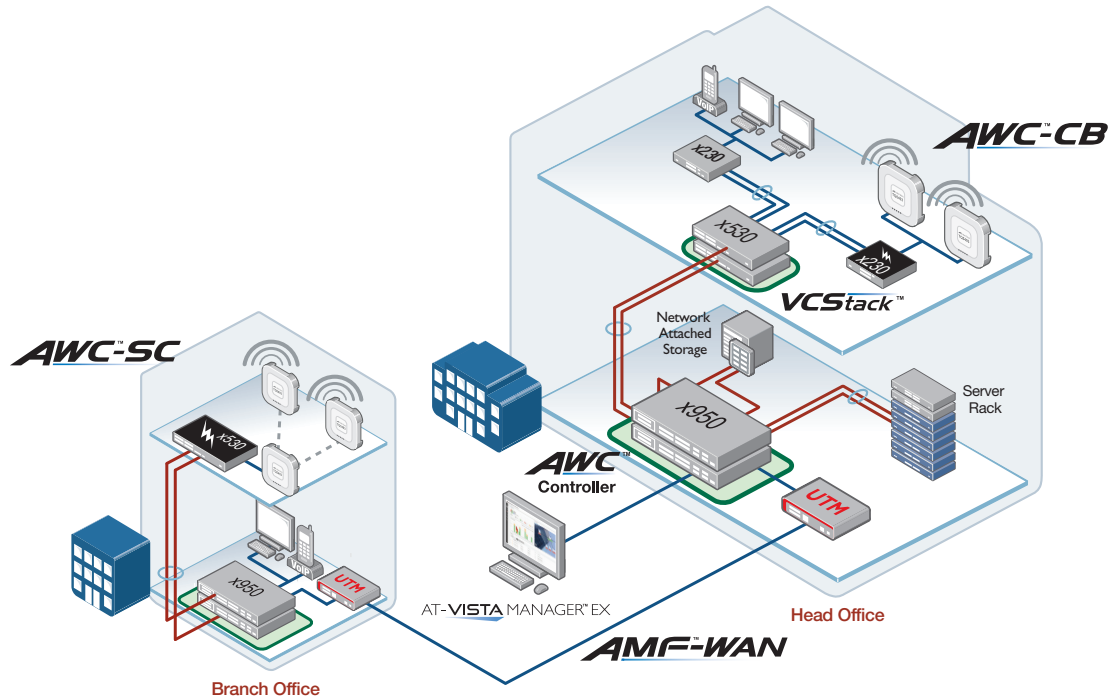
The configurable Network Health tab provides overall status, and visibility of chosen network devices, servers, and more:



The Device Health tab shows at-a-glance status and trends for CPU, memory, storage, and temperature of Allied Telesis and third-party devices.

The Traffic Health tab shows device error counters and link health across the network.

# KEY SOLUTIONS

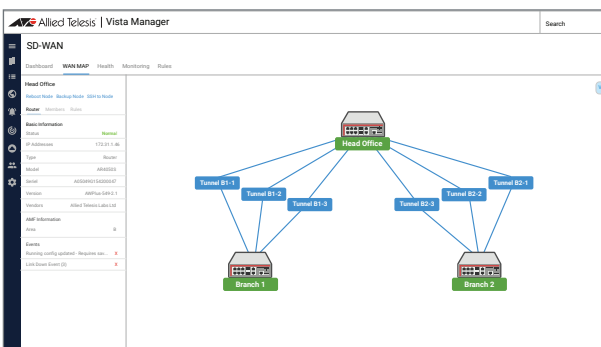


## AMF-WAN

AMF-WAN (SD-WAN) improves inter-branch network performance by automatically optimizing and securing application traffic over multiple WAN links between offices.

The SD-WAN orchestrator enables setting acceptable performance metrics for any application, and load-balancing traffic. By monitoring VPN link quality, time-sensitive or critical traffic is automatically switched over to the optimal link as required.

Visual monitoring enables easy management of the WAN, with the ability to drill down to specific links or applications to assess live and historical operation.

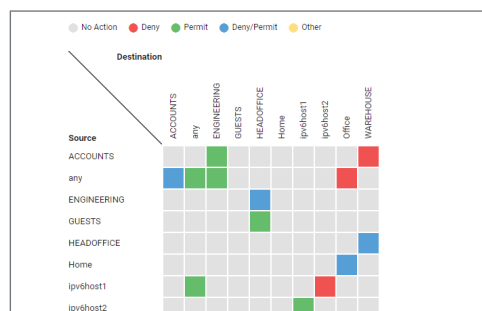


## AMF Plus features

AMF Plus features enables effortless translation of business intent into dynamic network change to make network management easy. They include:

- Dynamic creation of VPNs between locations with graphical drag-and-drop simplicity
- Prioritizing business-critical applications between office locations

- Shaping inter-branch traffic for maximum performance
- Breaking out cloud-based applications directly from the branch. Application databases can be shared from the head-office enabling breakout from a wider range of Allied Telesis branch-office end-points
- Simple setting of security levels for multiple locations
- Using the configurable health dashboard to monitor overall status, and key network devices and servers
- Monitoring of CPU, memory, storage, and temperature of Allied Telesis and third-party devices. See network health status and trends at a glance, and simplify fault resolution
- Monitoring link health across the network, including latency, jitter, packet loss, and interface status
- Managing traffic, and automated control of the priority and performance of key applications right through the network, using centralized visual Quality of Service (QoS) administration
- Easily visualizing Access Control Lists (ACLs) in a matrix format to quickly and simply check for coverage inconsistencies, and ensure user data and different traffic types are managed in line with business policies. Configure rules for any network or destination to manage traffic through the network



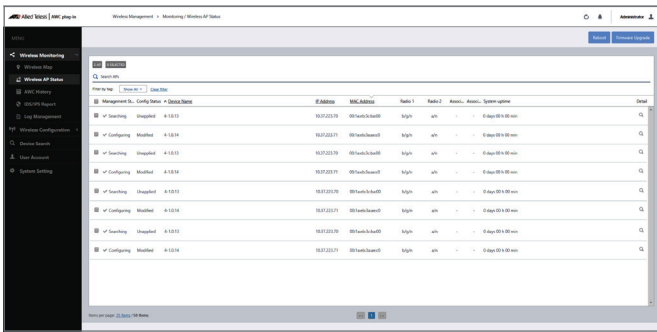
Easy visual ACL management

## AWC plug-in

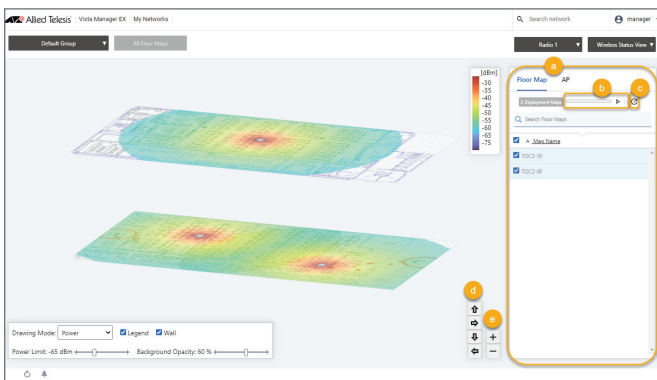
Autonomous Wave Control (AT-AWC™) regularly analyzes wireless networks, and dynamically updates APs for improved connectivity and performance, by automatically minimizing coverage gaps and reducing interference.

Multi-channel, single-channel (Channel Blanket), and hybrid (multi-channel and Channel Blanket) wireless network modes, supports maximum data throughput and seamless roaming<sup>5</sup>

AWC-Smart Connect (AWC-SC)<sup>6</sup> provides plug-and-play wireless network growth, as new APs only need a power connection to automatically create resilient wireless uplink connections to other APs.



The wireless concierge enables easy visualization with floor and heat maps, including client counts, with the 3D view allowing multi-floor signal management. AWC Smart Activation (AWC-SAC) intelligently monitors and manages signal transmission, and autonomously controls AP activation to provide the best possible coverage and performance.



## Multi-level wireless management

AWC Remote Monitor in Vista Manager EX centrally manages wireless networks that are controlled by Vista Manager mini deployments – including integrating floor and heat maps, and centrally storing all wireless logs for easy review.

AWC Sky Defender detects the MAC addresses of BYOD devices connected to Vista Manager mini wireless deployments for network access control of user devices, as well as monitoring their connection status.

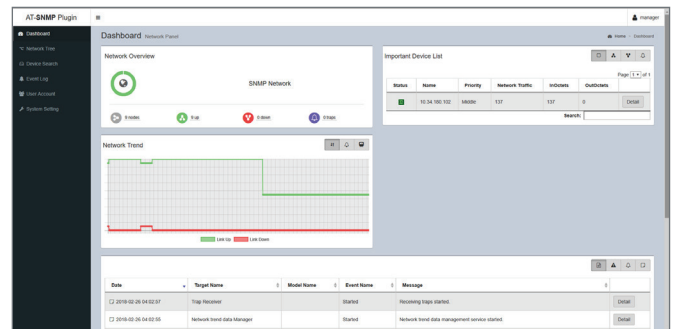
AWC Vista Appliance Storage (VAS) stores the history of wireless data, connection status, floor maps and more on a remote Vista Manager Network Appliance for a selectable time-frame for auditing and review as required.

<sup>5</sup> Channel Blanket and Hybrid modes available on TQ6702 GEN2, TQ6602 GEN2 & TQ6602 APs

<sup>6</sup> AWC-SC available on TQ6702 GEN2 and TQ6602 GEN2 APs

## SNMP plug-in

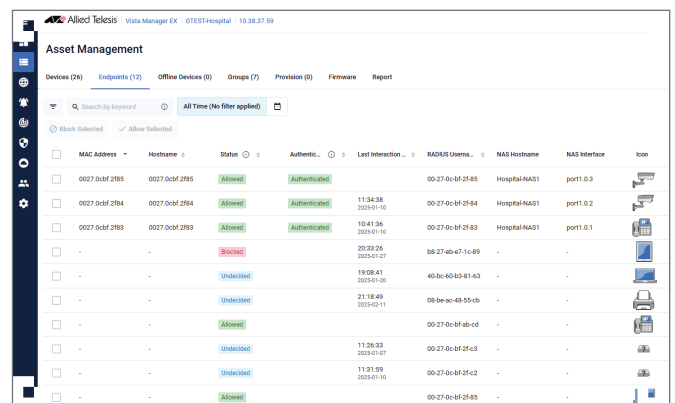
The Simple Network Management Protocol (SNMP) plug-in can acquire detailed information and statistics from a broad range of networking devices. Different views enable users to manage devices the way they prefer. It supports management of up to 2000 devices, and in large networks it automatically searches for SNMP agents and displays each device found in tree form, for an easy view of the overall network topology.



## Intelligent edge security

View agentless endpoints that do not have full authentication capability, but attempt network access, on Vista Manager's asset management page. Local RADIUS and the AT-RADgate RADIUS server are both supported for control of endpoints in line with business security policies.

These endpoints can be allowed or blocked.



When using the third-party Nozomi Guardian or Microsoft InTune plugins, endpoint security alerts are displayed in Vista Manager on the network map and in asset management.

With Nozomi Guardian endpoint security alerts, endpoints can be automatically blocked by Vista Manager to protect the network based on the severity of the security alert.

## AMF-Security application integration

The AMF-Sec controller application partners with best-of-breed firewall and security appliances. When the security appliance detects an internal malware threat, the AMF-Sec controller responds immediately to isolate the affected part of the network and quarantine the suspect device, enabling a self-defending network. Remediation can be applied so the device can re-join the network with minimal disruption.

AMF-Sec provides visual alerts on the Vista Manager network map, to make finding the suspect device simple so remediation can be applied.

## Requirements for Vista Manager EX version 3.16 (Windows server version)

System requirements		
Minimum specification (supports 600 access points)		
CPU <sup>7</sup>	Intel Core i5, 4 core processor, 2.5GHz or higher	
Memory (RAM)	8GB (without SNMP plugin)	16GB (with SNMP plugin)
Storage Capacity	240GB (without SNMP plugin)	340GB (with SNMP plugin)
AMF Plus nodes	3000	1500
AWC wireless APs	600	600
SNMP nodes	0	500
IOPS (Input/Output Per Second) <sup>8,9</sup>	210	210
Specification to support up to 3,000 access points		
CPU <sup>7</sup>	Intel Xeon Gold, 12 core processor, 2.6GHz or higher	
Memory (RAM)	16GB (without SNMP plugin)	32GB (with SNMP plugin)
Storage Capacity	600GB (without SNMP plugin)	1.5TB (with SNMP plugin)
AMF plus nodes	3000	3000
AWC wireless APs	3000	3000
SNMP nodes	0	2000
IOPS (Input/Output Per Second) <sup>8,9</sup>	2000	2000

System requirements when logging AWC wireless operation						
Logging requirement					Required system specifications	
Access Points	Plugins being used		AWC logging duration		RAM	SSD capacity <sup>9</sup>
	AWC	SNMP	Intrusion detection	Associated Clients		
up to 100	■	-	1 Day	1 Day	18GB	240GB
	■	■	1 Day	1 Day	26GB	340GB
101 to 3,000	■	-	-	14 Days	54GB	1TB
	■	-	14 Days	-	186GB	1.5TB
	■	-	1 Day	1 Day	28GB	1TB
	■	-	14 Days	14 Days	205GB	1.5TB

System requirements when using advanced traffic monitoring (sFlow data collection)			
No.switch ports monitored with sFlow	CPU <sup>8</sup>	RAM	SSD capacity <sup>10</sup>
1 Port	Intel Core i5, 4 core processor, 2.5GHz or higher	16GB	10GB
2 ports	Intel Core i5, 4 core processor, 2.5GHz or higher	16GB	20GB
10 ports	Intel Core i7, 8 Core processor, 2.5Ghz or higher	16GB	100GB
30 ports	Intel Core i7, 8 Core processor, 2.5Ghz or higher	32GB	500GB
40 ports	Intel Core i7, 8 Core processor, 2.5Ghz or higher	32GB	700GB

<sup>7</sup> Vista Manager must be installed on a server with a CPU that supports AVX2

<sup>8</sup> When using the Logging or Client Location Estimation features, it is necessary to use storage with IOPS of at least 20,000 (e.g. SSD storage rather than HDD storage) regardless of the number of devices

<sup>9</sup> When using the Advanced Traffic Monitoring feature, it is necessary to use SSD storage (rather than HDD storage) regardless of the number of devices

## Requirements for Vista Manager EX version 3.16 (Windows server version)

Operating requirements	Up to 600 access points	Up to 3,000 access points
Windows OS versions		
Windows Server 2022 (essential, standard, or datacenter editions)	■	■
Windows Server 2019 (essential, standard, or datacenter editions)	■	■
Windows Server 2016 (essential, or datacenter editions)	■	100GB
Virtualization platform for Windows server		
VMWare vSphere Hypervisor (ESXi) 6.0/6.5/6.7/7.0/8.0	■	■
Hyper-V on Windows Server version 2012 R2 onwards	■	■
Nutanix AHV version AOS5.20.1.1 (LTS) (with Windows Server 2019)	■	■

## Requirements for VST-VRT version 3.14.1

Support limits	Without SNMP plugin	With SNMP plugin
AMF Plus nodes	3000	1500
AWC wireless APs	600	600
SNMP nodes	-	1000
System requirements		
Virtual environment	Windows Server Hyper-V 2019 or 2022 , Hyper-V Server 2019, VMWare vSphere Hypervisor (ESXi) 7.0/8.0, Nutanix AHV 6.5	
CPU <sup>7</sup>	Intel Core i5, 4 core processor, 2.5GHz or higher	
Memory (RAM)	32GB	
Storage Capacity	695GB	
IOPS (Input/Output Per Second) <sup>8,9</sup>	350,000(Equivalent to SSD(Solid State Drive))	
Network Interface	GbE x 1 (or 2 GbE NICs when using Ethernet bonding)	

## Browser Support

Web browsers	Minimum resolution
Google Chrome	1280 x768 pixels
Mozilla Firefox	
Microsoft Edge	
Safari for iPad	

<sup>7</sup> Vista Manager must be installed on a server with a CPU that supports AVX2

<sup>8</sup> When using the Logging or Client Location Estimation features, it is necessary to use storage with IOPS of at least 20,000 (e.g. SSD storage rather than HDD storage) regardless of the number of devices

<sup>9</sup> When using the Advanced Traffic Monitoring feature, it is necessary to use SSD storage (rather than HDD storage) regardless of the number of devices

## Vista Manager EX version 3.16 / VST-VRT version 3.14.1 Licenses

Note: You can try Vista Manager EX for free by activating the 90 Day trial license after installation. The Trial license includes support for the AWC and SNMP plug-ins.

License name	Subscription
AT-FL-VISTA-BASE-1YR	1 year Vista Manager EX license
AT-FL-VISTA-BASE-5YR	5 year Vista Manager EX license
AT-FL-VISTA-AWC10-1YR <sup>10</sup>	1 year Vista Manager AWC plug-in license for managing up to 10 access points
AT-FL-VISTA-AWC10-5YR <sup>10</sup>	5 year Vista Manager AWC plug-in license for managing up to 10 access points
AT-FL-VISTA-CB10-1YR-2022 <sup>10, 11</sup>	1 year Vista Manager AWC-Channel Blanket and AWC-Smart Connect license for managing up to 10 access points
AT-FL-VISTA-CB10-5YR-2022 <sup>10, 11</sup>	5 year Vista Manager AWC-Channel Blanket and AWC-Smart Connect license for managing up to 10 access points
AT-FL-VISTA-SNMP-1YR <sup>12</sup>	1 year Vista Manager SNMP plug-in license
AT-FL-VISTA-SNMP-5YR <sup>12</sup>	5 year Vista Manager SNMP plug-in license

<sup>10</sup> Purchase one license per 10 access points

<sup>11</sup> Channel Blanket and Smart Connect require an AWC-CB license, an AWC license, and a Vista Manager EX base licenses to operate

<sup>12</sup> If your AlliedWare Plus network is running AMF Plus automation and management, then the SNMP plugin is automatically enabled in Vista Manager with no license required. If the network is running the older AMF automation and management, then the Vista Manager SNMP license is required

## VST-VRT version 3.14.1 only licenses

License name	Subscription
AT-AMFCLLOUD-PLUS-CTRL-1YR	1 year AMF Plus Controller 10 areas base/add-on license (maximum 300 areas)
AT-AMFCLLOUD-PLUS-CTRL-5YR	5 year AMF Plus Controller 10 areas base/add-on license (maximum 300 areas)
AT-AMFCLLOUD-PLUS-BASE-1YR	1 year AMF Plus Master license for up to 10 nodes
AT-AMFCLLOUD-PLUS-BASE-5YR	5 year AMF Plus Master license for up to 10 nodes
AT-AMFCLLOUD-PLUS-EX1-1YR	1 year AMF Plus Master 1 node add-on license (maximum 300 nodes)
AT-AMFCLLOUD-PLUS-EX1-5YR	5 year AMF Plus Master 1 node add-on license (maximum 300 nodes)
AT-AMFCLLOUD-PLUS-EX10-1YR	1 year AMF Plus Master 10 node add-on license (maximum 300 nodes)
AT-AMFCLLOUD-PLUS-EX10-5YR	5 year AMF Plus Master 10 node add-on license (maximum 300 nodes)
AT-FL-AMFSec-BASE10-1YR <sup>13, 14</sup>	1 year Base software including 10 node license
AT-FL-AMFSec-BASE10-5YR <sup>13, 14</sup>	5 year Base software including 10 node license
AT-FL-AMFSec-ADD10-1YR <sup>13, 14</sup>	1 year license for an additional 10 nodes
AT-FL-AMFSec-ADD10-5YR <sup>13, 14</sup>	5 year license for an additional 10 nodes
AT-RADIUS-BASE-1YR	1 year AT-RADgate RADIUS server license (1000 entries)
AT-RADIUS-BASE-5YR	5 year AT-RADgate RADIUS server license (1000 entries)
AT-RADIUS-ADD1000-1YR	1 year AT-RADgate RADIUS server add-on license (1000 entries)
AT-RADIUS-ADD1000-5YR	5 year AT-RADgate RADIUS server add-on license (1000 entries)

<sup>13</sup> This license is available with AMF-Sec version 2.3.x or later, which runs on the hardware-based Vista Manager Network Appliance (VST-APL), or the software-based Vista Manager virtual deployment option (VST-VRT)

<sup>14</sup> When using AMF-Security with AMF communication, you only need the AMF-Sec BASE10 license for any number of nodes. When using AMF-Security with OpenFlow communication, you need a BASE10 license for the first 10 nodes, and an ADD10 license for each additional 10 nodes.ense is required