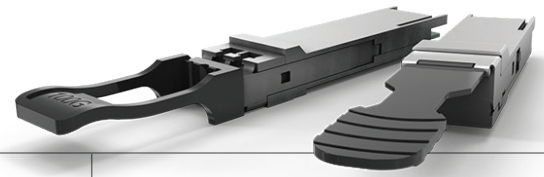


QSFP28 100 Gigabit Series

100 Gigabit Quad Small Form-Factor Pluggable Modules



The Allied Telesis QSFP28 Series offers the latest industry-standard connectivity in a flexible, small form factor. These hot-swappable transceiver modules simply plug into any compatible Allied Telesis product.

Options

Allied Telesis QSFP28 Series 100 Gigabit Quad Small Form-Factor Pluggables (QSFPs) are supported on all Allied Telesis devices with QSFP28 uplink connections.

The QSFP28 is hot-swappable to allow for network changes without removal or reconfiguration of costly network equipment.

Applications

The QSFP28 Series supports 100GbE interconnects. They are ideal for Datacom/Telecom switch and router connections, as well as data aggregation, backplane, proprietary protocol and high-density applications.

Interoperability

The Allied Telesis QSFP28 is fully compliant with industry-standard networking regulations so it may be used on any networking equipment which complies with industry standards.

SPECIFICATIONS

Power Consumption

- Power consumption: QSFP28-SR4: <2.5W
QSFP28-LR4: <4.0W

Environmental

- Operating temperature
0°C to 70°C (32°F to 158°F)
- Storage temperature
-40°C to 85°C (-40°F to 185°F)
- Relative humidity
0 to 85% (non-condensing)

Key Features

- Compliant to IEEE 802.3bm 100GBASE-SR4 standard (QSFP28-SR4)
- Compliant to IEEE 802.3ba 100GBASE-LR4 standard (QSFP28-LR4)
- MSA compliant
- Compliant to SFF-8665 (QSFP28 Solution) Revision 1.8
- Up to 25Gbps data rate per wavelength
- Up to 10 km transmission on single mode fiber (SMF)
- Operating case temperature: 0~70°C
- Low power consumption of max 2.5W (Typ. 1.8W) (SR4) and 4.0W (LR4)
- MPO connector (SR4)
- LC duplex connector (LR4)
- RoHS-6 compliant

	Fiber type	Connector type	Maximum distance	Wavelength	DDM*	Transmit		Receive sensitivity	Power budget	Overload	Operating temperature
						min	max				
QSFP28SR4	MMF	MPO	100 m on OM4 fiber	850	Yes	-6 dBm	3 dBm	-12 dBm	6 dBm	3 dBm	0°C to 70°C (32°F to 158°F)
QSFP28LR4	SMF	LC	10 km	1296 nm** 1300 nm** 1304 nm** 1308 nm**	Yes	-4 dBm	4 dBm	-9 dBm	5 dBm	5 dBm	0°C to 70°C (32°F to 158°F)

*Digital Diagnostics Monitoring

** Central wavelengths of the 4 CWDM channels

ORDERING INFORMATION

AT-QSFP28SR4	100G, QSFP28 SR4, MMF, MPO-12
---------------------	-------------------------------

AT-QSFP28LR4	100G, QSFP28 LR4, SMF, LC
---------------------	---------------------------