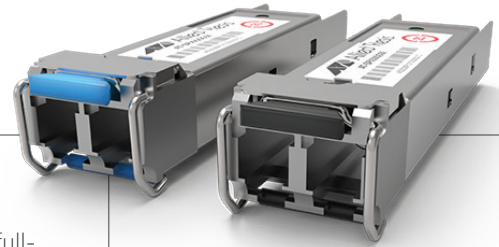


SP 100Mbps Series

Small Form-Factor Pluggables



Overview

The Allied Telesis 100Mbps SP Series offers the latest industry standard in flexible, full-duplex, Fast Ethernet connectivity. These hot-swappable interfaces simply plug into the SFP slot on all SFP-compatible products. Configuration can be optimized to meet a wide variety of distance and service requirements.

Options

Allied Telesis SP 100Mbps Series Small Form-Factor Pluggables (SFPs) offers short-haul and long-haul. This flexibility allows network managers to easily extend network distance and bandwidth.

Compatibility

SP 100Mbps Series SFPs are Multi-Sourcing Agreement (MSA)-compliant, and fully adhere to industry standard networking regulations. This allows the SP 100Mbps Series to be used with other MSA-compliant platforms that support SFP uplink connections. For Cisco compatibility please refer to the “SFP Compatibility Flyer”

Standard Data Rates Supported

- Fast Ethernet

Environmental Specifications

- Operating Temperature: 0°C to 70°C (32°F to 158°F)
- Operating humidity: 0% to 85%, non-condensing
- Storage Temperature: -40°C to 85°C (-40°F to 185°F)
- Storage humidity: 0% to 80%, non-condensing

Key Features

- Compact size
- Flexible architecture
- Plug and play for ease of use
- Self-locking mechanism
- MSA compliant
- Two year warranty*

*Warranties may be region-specific. For local warranty periods, please visit alliedtelesis.com/support, or contact your local sales office.

SPECIFICATIONS

	Fiber Type	Connector Type	Maximum Distance	Wavelength Tx/Rx	Transmit		Receive Sensitivity	Power Budget	Overload	Operating Temperature
					Min	Max				
SPFX/2-90	MMF	LC	2 km	1310	-20dBm	-14dBm	-31dBm	11dBm	0dBm	0°C to 70°C (32°F to 158°F)
SPFX30/I	SMF	LC5	30 km	1310	-9dBm	-3dBm	-32dBm	23dBm	-3dBm	-40°C to 105°C (-40°F to 221°F)
SPTX/100MB	10/100/1000T	RJ45	100 m	-	-	-	-	-	-	0°C to 70°C (32°F to 158°F)

MMF = Multi Mode Fiber, SMF = Single Mode Fiber

ORDERING INFORMATION

AT-SPFX/2-90	2 km, 100FX (LC), 1310 nm, TAA compliant
AT-SPFX30/I	30 km, 100FX (LC), 1310 nm, I-Temp, TAA compliant
AT-SPTX/100MB-001	100 m, 10/100TX (RJ45)