

# TQ7403-R

## Wi-Fi 6E (802.11ax) Wireless Access Point

The Allied Telesis TQ7403-R combines a ultra high-performance Wi-Fi 6E access point and a secure VPN router in an innovative all-in-one connectivity solution.

### Overview

The TQ7403-R provides high-speed tri-band Wi-Fi 6E connectivity for wireless devices, and a secure Internet connection from the built-in VPN router. The single-unit design ensures easy configuration and management reducing costs for small businesses, or enterprises with multiple locations, such as retail stores, cafes, and more.

For powerful wireless connectivity, 2.4GHz, 5GHz, and 6GHz radios deliver a raw capacity of 2.4 Gigabits. The 6GHz band uses an internal antenna for increased efficiency and throughput, while the 2.4GHz and 5GHz bands use an external antenna, which is removable and can be replaced with an optional extension cable and patch antenna to extend wireless range, expanding deployment options and usage scenarios.

Multi-User Multiple Input and Multiple Output (MU-MIMO) allows multiple clients to send and receive data at the same time, substantially increasing throughput for a superior wireless user experience.

Secure WAN routing ensures reliable connectivity to the Internet, head-office, and other branch locations. Critical data is protected with a zone-based firewall, and remote access to cloud based or head-office based business applications is assured using secure IPsec VPNs.

Flexible installation options include desktop use, and wall or ceiling mounting. Power can be supplied by Power over Ethernet, or by an optional AC power adapter.



## KEY FEATURES

### Wi-Fi 6E

IEEE 802.11ax Wi-Fi 6E connectivity delivers fast performance and efficient bandwidth distribution in crowded wireless environments. Use of the 6GHz band (up to 1200 MHz) allows more devices to connect and provides stable high throughput.

Features such as OFDMA and bidirectional MU-MIMO that increase the intelligence of the AP in managing multiple client connections at once, providing better throughput, connectivity and overall performance. With support for increased numbers of clients, and optimization for high-bandwidth and real-time applications like streaming video, the TQ7403-R is ideal as a single unit deployed in small branch locations.

### Captive Portal

Manage customer and staff Wi-Fi access with captive portal, by taking new users to a login page to authenticate before gaining access to any online resources and applications.

Login options include direct online access, external authentication, or redirection to third party services—for example, social media sites like Facebook or Twitter.

### Virtual APs with Multiple SSIDs

The TQ7403-R supports Virtual AP (VAP) functionality, with the assignment of different SSIDs and security policies for each VAP on the physical device.

VAPs allow logical wireless network separation and improved throughput by enabling communication by application or users, such as separate customer or staff access.

### QR codes simplify connectivity

Generate a QR code on the AP that can be scanned by smartphones and other wireless devices to enable quick and easy connection to the Wi-Fi network, eliminating the need to enter SSIDs and passwords.

### Routing

#### Application aware firewall

A zone-based firewall provides secure Internet connectivity, protecting users online access and preventing business information leaks.

Deep Packet Inspection (DPI) enables application aware control and prioritization of traffic using the free built-in application list, or the subscription-based list which is regularly updated.

The high-performance DPI engine, along with multiple threat detection and protection capabilities, provide single-pass low-latency inspection of all network traffic, while blocking intrusion attempts and malware.

#### DPI rule sharing

DPI sharing is another way for the TQ7403-R to become application-aware, learning application

categorization information from the central firewall, for even more comprehensive awareness of the various applications on the network.

### Virtual Private Networking (VPN)

IPsec site-to-site VPNs connect the local branch to head-office and other locations for consistent access to company resources, and enable construction of secure inter-company networks using inexpensive Internet services.

SSL/TLS remote worker VPNs allow easy access to digital resources when away from the office or store, using the OpenVPN client.

### Software Defined WAN (SD-WAN)

SD-WAN enables users to measure the quality of their inter-branch VPN links and send real-time and other applications over the most suitable connection. Users can also load-balance an application over multiple WAN links and prioritize the delivery of business-critical applications.

### Flexible Management

#### Graphical User Interface (GUI)

The Device GUI provides easy visual stand-alone management of wireless and routing functionality.

Monitoring Wi-Fi and firewall performance allows proactive management that optimizes operation for a secure business environment with reliable online access.

## Centralized management

For smaller networks, the Device GUI includes a wireless controller which enables the TQ7403-R to manage itself and up to 50 other APs, for an all-in-one Wi-Fi monitoring and management solution.

For larger networks, multiple APs can be centrally managed using the Autonomous Wave Control (AWC) wireless controller built-in to Vista Manager. Enjoy seamless visibility of APs alongside switches, firewalls, third-party, and endpoint devices.

AWC regularly analyses the Wi-Fi network, automatically optimizing wireless settings to reduce

interference and minimize coverage gaps—all with no user intervention.

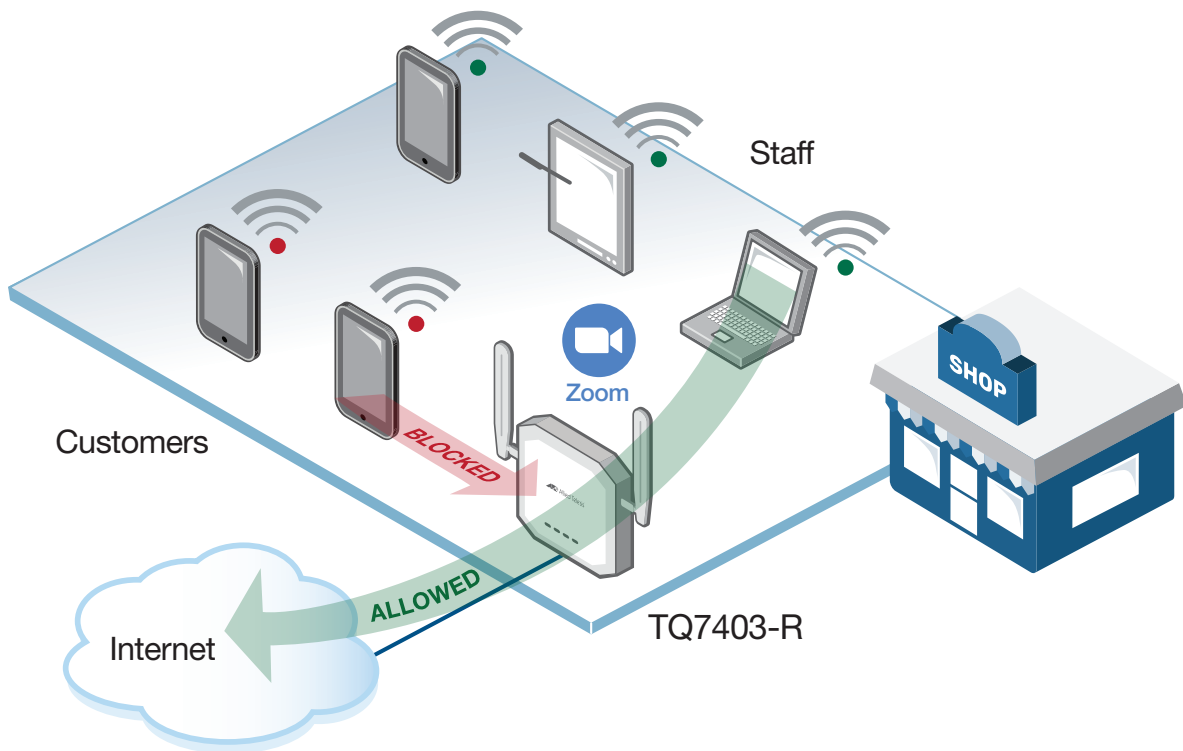
All units are automatically backed-up using Autonomous Management Framework Plus (AMF Plus), and can be restored with plug-and-play simplicity.

Vista Manager, AMF Plus, and AWC provide visual and automated management that greatly reduces the time and cost of managing multiple APs in larger deployments.

Wireless Performance	
Capacity	2.4 Gigabits
Routing Performance	
Firewall throughput	1,124 Mbps
VPN throughput	
AES128/SHA256	199 Mbps
AES256/SHA256	136 Mbps

## KEY SOLUTIONS

# A Single-unit Network



The TQ7403-R provides a single-unit network ideal for small businesses, or enterprises with multiple locations such as retail stores. Instead of a router, switch and wireless AP, only one device provides seamless wireless access, and secure connectivity to the Internet, and/or head-office and other business locations.

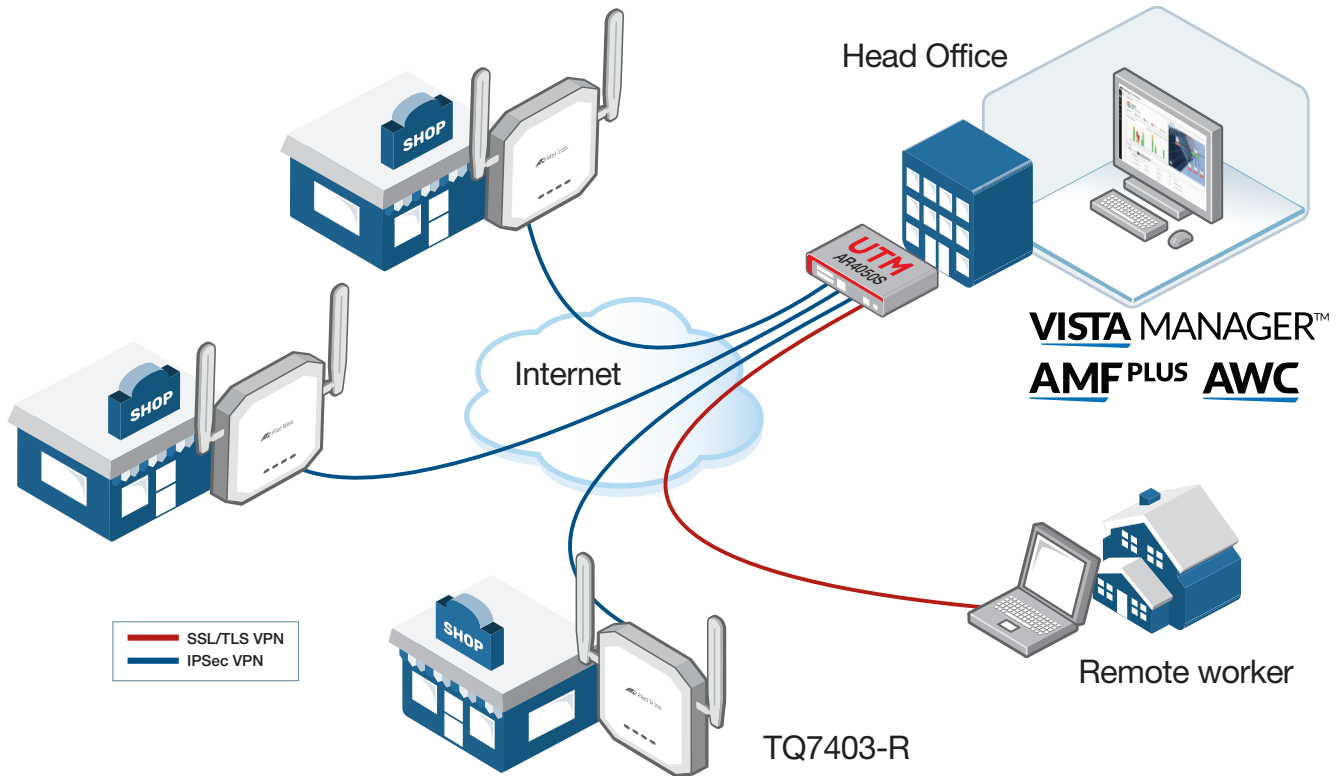
The application-aware firewall enables full control over who uses applications to

enforce security acceptable use policies. For example, Zoom conference calls may be allowed for staff only.

Simple yet comprehensive visual management and monitoring using the Device GUI ensures reduced time, effort, and cost to install and run the network.

## KEY SOLUTIONS

# Centralized Management



Businesses with multiple locations can enjoy centralized and automated management of the TQ7403-R units installed at each branch. Roll-out of new locations is as easy as connecting the new single-unit branch network back to the head-office.

IPSec site-to-site VPNs ensure secure access between business locations, while SSL/TLS remote worker VPNs provide

easy access to digital resources when away from the office, using the OpenVPN client.

Vista Manager enables full visual monitoring of all locations for proactive management. AMF Plus automates backup, provisioning and upgrade of any device, and AWC automatically optimizes wireless performance, so all locations enjoy the best possible user experience.

# SPECIFICATIONS

## Physical Specifications

		Width	Depth	Height		Weight	100M/1G/2.5G (RJ-45) Copper Ports
TQ7403-R	No antenna	200 mm (7.87 in)	210 mm (8.23 in)	45 mm (1.78 in)	2 x 2 (2.4GHz) + 2 x 2 (5GHz) + 2 x 2 (6GHz)	1.2 kg (2.64 lb)	2 (PoE-in port)
	with protrusion antenna	290 mm (11.427 in)	210 mm (8.23 in)	160 mm (6.30 in)			

## Power Characteristics

	Power Supply	Average Power Consumption	Maximum Power Consumption	Max Heat Dissipation
TQ7403-R	100~240VAC	14W	18W	61.48 BTHu
	PoE	15W	19.4W	66.15 BTHu

## Wireless Features

### Wi-Fi

- OFDMA
- Bi-directional Multi-user MIMO
- Airtime fairness
- Automatic channel selection
- Automatic control of transmission power
- Band Steering
- Fast roaming
- RF load balancing
- Wireless Distribution System (WDS)
- Zero Wait DFS
- Neighbor AP detection
- Kensington lock
- Simple Certificate Enrollment Protocol (SCEP) supports secure management

### Compliance

- Certificate
  - Wi-Fi certified
  - CE
  - RCM
  - FCC
  - IMDA (For Singapore)<sup>1</sup>
  - OFCA (For Hong Kong)<sup>1</sup>
  - NBTC (For Thailand)<sup>1</sup>
  - SIRIM (For Malaysia)<sup>1</sup>
  - NTC (Philippines)<sup>1</sup>
- Safety
  - EN 62368-1
  - UL 62368-1
  - UL 2043
- ElectroMagnetic Compatibility
  - EN 301 489-1
  - EN 301 489-17
  - EN 303 687
  - EN 55024
  - EN 55032, Class B
  - EN 55035
  - EN 60601-1-2
  - EN 61000-3-2, Class A
  - EN 61000-3-3
  - EN 61000-4-2
  - EN 61000-4-3
  - EN 61000-4-4
  - EN 61000-4-5
  - EN 61000-4-6
  - EN 61000-4-8
  - EN 61000-4-11
  - VCCI Class B
- Radio equipment
  - AS/NZS 4268
  - EN 300 328
  - EN 301 893
  - FCC 47 CFR Part 15, Subpart C
  - FCC 47 CFR Part 15, Subpart E5

### Operational Modes

- Standalone (supports up to 500 clients per radio)
- Centrally managed by Vista Manager EX (up to 3,000 units)
- Centrally managed by Vista Manager Network Appliance (up to 500 units)
- Centrally managed by the embedded wireless controller (up to 50 units)

### Security

- Authentication and Accounting
  - Open System Authentication
  - Enhanced Open Authentication
  - IEEE 802.1X Authentication and Accounting
  - IEEE 802.1X RADIUS support
  - Shared Key Authentication
  - WPA (Enterprise, Personal)
  - WPA2 (Enterprise, Personal)
  - WPA3 (Enterprise, Personal)
  - Captive Portal (External RADIUS, Click-Through)
  - Wi-Fi Alliance certified Passpoint® enables auto-detection and connection of client devices
- Encryption
  - WEP: 64/128 bit (IEEE 802.11a/b/g only)
  - WPA/WPA2: CCMP (AES), TKIP
  - WPA3: CCMP/GCMP (AES/CNSA)
- MAC address filtering (Up to 1024 MAC address)
- MAC address filtering per VAP
- SSID hiding/ignoring
- Client isolation
- Allow, block, and record client connections

### Embedded Antennas

- Omni-directional
  - Frequency band: 2.4 GHz
  - Max. peak gain: 2.83 dBi
- Omni-directional
  - Frequency band: 5 GHz
  - Max. peak gain: 3.85 dBi
- Omni-directional
  - Frequency band: 6 GHz
  - Max. peak gain: 5.93 dBi

### Radio Characteristics

- Supported frequencies:
  - 2.412 ~ 2.472 GHz
  - 5.150 ~ 5.250 GHz
  - 5.250 ~ 5.350 GHz
  - 5.500 ~ 5.720 GHz
  - 5.745 ~ 5.825 GHz (Not supported in EMEA)
  - 5.925 ~ 6.425 GHz
  - 6.425 ~ 7.125 GHz (US and Canada)
- Modulation Technique
  - 802.11a/g/n/ac: OFDM
  - 802.11 ax: OFDMA
  - 802.11b: DSSS, CCK, DQPSK, DBPSK
  - 802.11ac: BPSK, QPSK, 16QAM, 64QAM, 256QAM
  - 802.11a/g/n: BPSK, QPSK, 16QAM, 64QAM, 256QAM
  - 802.11 ax: BPSK, QPSK, 16QAM, 64QAM, 256QAM, 1024QAM
- Data Rate
  - IEEE802.11b 11/5.5/2/1Mbps
  - IEEE802.11a/g 54/48/36/24/18/12/9/6Mbps
  - IEEE802.11g/n 6.5-600Mbps (MCS0-31)
  - IEEE802.11g/n 6.5-800Mbps (MCS0-31)<sup>2</sup>
  - IEEE802.11a/ac 6.5-1733.3Mbps (MCS0-9)
  - IEEE802.11a/ax 6.5-2401.9Mbps (MCS0-11)
- Media Access
  - CSMA/CA + Ack with RTS/CTS
- Diversity
  - Spatial diversity

### Wireless standards

- IEEE 802.11 a/b/g/n/ac/ax 2x2:2ss MU-MIMO
- IEEE 802.11k Radio Resource Measurement of Wireless LANs
- IEEE 802.11v Basic Service Set Transition Management Frames
- IEEE 802.11r Fast Basic Service Set Transition

<sup>1</sup> The TQ7403-R is the same product as the TQ7403 with router functionality added. The compliance standards were obtained with the TQ7403

<sup>2</sup> Using 256 Quadrature Amplitude Modulation

IEEE 802.11e WMM for Quality of Service  
 IEEE 802.11i WPA/WPA2/WPA3 802.1x for Security

## Routing Features

### Firewall

- Application aware DPI firewall uses the free built-in or subscription-based application lists
- DPI rule sharing
- Web categorization lets businesses manage the types of website their staff or visitors can access
- Application Layer Gateway (ALG) for FTP, SIP and TFTP
- Bandwidth limiting control
- Control network access and traffic regionally with GeoIP (Geographic IP)
- Static NAT (port forwarding), double NAT and subnet-based NAT
- Masquerading (outbound NAT)
- Enhanced NAT (static and dynamic)
- Security for IPv6 traffic

### Diagnostic Tools

- Automatic link flap detection and port shutdown
- Ping polling for IPv4 and IPv6
- TraceRoute for IPv4 and IPv6

### Authentication

- Strong password security and encryption
- Local RADIUS server for up to 100 users
- TACACS+ authentication and authorization
- 802.1x and MAC authentication on LAN ports
- Dynamic VLAN assignment when using MAC authentication

### VPN Tunneling

- Diffie-Hellman key exchange
- Secure encryption algorithms: AES-128, AES-192, AES-256, and AES-GCM
- Secure authentication: SHA-1, SHA-256, SHA-512
- IKEv2 key management
- IPsec Dead Peer Detection (DPD)

- IPsec NAT traversal
- IPsec VPN for site-to-site connectivity
- Multipoint VPN for connecting a single VPN to multiple end points
- VPN pass-through
- Redundant VPN gateway
- SSL/TLSv1.3 for secure remote VPN access using OpenVPN
- IPv6 tunneling (DS Lite, LW4o6, MAP-E)
- SD-WAN performance measures and load balances multiple inter-branch VPN links

### Ethernet standards

- IEEE 802.1AX-2008 Link Aggregation (static and dynamic)
- IEEE 802.3u 100BASE-TX
- IEEE 802.3ab 1000BASE-T
- IEEE 802.3bz 2.5GBASE-T ("multi-gigabit")
- IEEE 802.3x Flow Control
- IEEE 802.3at Power over Ethernet+
- IEEE 802.1Q VLAN Tagging

## SPECIFICATIONS

Memory	
Memory (RAM)	2GB
Memory (Flash)	512MB
Networking	
Routing	Static, Policy Based Routing (PBR), SD-WAN
IP address management	Dynamic ENAT, Static NAT/ENAT, Subnet base NAT, DNS relay , ESP/PPTP/L2TP Pass-through
PPPoE	PPPoE (Multi-Session, Session key apprience)
VLANs	802.1Q tagging
Discovery	LLDP, LLDP-MED
Traffic control	8 priority queues, DiffServ, HTB scheduling, RED curves
Tunneling and encryption	
Site-to-site VPN tunnels (IPsec)	30 (Recommended)
Encrypted VPN	IPsec, SHA-1, SHA-256, SHA-512, IKEv2
Encryption	AES-128, AES-192, AES-256, AES-GCM
Tunneling	DS (Dual Stack) Lite, Lightweight 4over6, and MAP-E support connecting IPv4 networks over an IPv6 Internet connection
VPN	IPSec site-to-site VPNs, Open VPN (SSL VPNs) for remote access
Point to point	GRE for IPv4 and IPv6, L2TPv3 Ethernet psuedo-wires
Wireless	
Radio	3 Radios (2.4GHZ, 5GHz, and 6GHz)
Bandwidth	20/40 (2.4GHz), 20/40/80MHz (5GHz), 20/40/80/160MHz (6GHz)
Spatial Stream	2.4GHz, 5GHz, 6GHz: 2 Stream MU-MIMO
Wireless function	Airtime fairness, Band Steering, Fast roaming, Wireless Distribution System (WDS), Zero Wait DFS, Virtual Access Point (VAP), SSID hiding/ignoring, Client isolation, Passpoint (Hotspot 2.0)
Wireless Security and Authentication	
Authentication and Accounting	Open System Authentication, Enhanced Open Authentication, IEEE 802.1X Authentication and Accounting, IEEE 802.1X RADIUS support, Shared Key Authentication, WPA (Enterprise, Personal) , WPA2 (Enterprise, Personal) , WPA3 (Enterprise, Personal), Captive Portal (External RADIUS, External page redirect, Click-Through, Walled Garden), Passpoint®
Encryption	WPA/WPA2: CCMP (AES), Enhanced Open CCMP(AES), WPA3 Personal CCMP (AES), WPA3 Enterprise CCMP/GCMP (AES)

## Wireless Security and Authentication

<b>Other</b>	MAC address filtering (Up to 1024 MAC address), SSID hiding/ignoring, Client isolation, Neighbor AP detection, Kensington lock, AMF-Security, allow / block / record client connections
Management	
<b>IP Address Management</b>	Static v4/v6, DHCP v4/v6 (server, relay, client), PPPoE, Dynamic DNS
<b>User interface</b>	Scriptable industry-standard CLI, Web-based GUI
<b>Network Management</b>	AMF Plus member, AWC management
<b>Other</b>	SNMPv1/v2c/v3, NTP client, Local RADIUS server, RADIUS client, ARP, Proxy ARP, Ping polling, Firmware upgrade, Backup/restore settings, Syslog notification, QR Code, Eco-friendly LED management
Environmental	
<b>Operating temperature range</b>	0°C to 50°C (32°F to 122°F)
<b>Storage temperature range</b>	-25°C to 70°C (-13°F to 158°F)
<b>Operating relative humidity range</b>	5% to 90% non-condensing
<b>Storage relative humidity range</b>	5% to 95% non-condensing
<b>Operating altitude range</b>	Up to 3,048 meters maximum (10,000 ft)

### Security Licenses

The Application Control license enables use of the comprehensive subscription-based application list, which is regularly and automatically updated. This provides greater application management than using the free built-in application list.

	Description	Includes
<b>AT-TQR-APP-1YR</b>	UTM Application Control license for 1 year	■ Application Control (Sandvine)
<b>AT-TQR-APP-5YR</b>	UTM Application Control license for 5 years	■ Application Control (Sandvine)
<b>AT-TQR-WEB-1YR</b>	UTM Web Categorization license for 1 year	■ Web Categorization (OpenText)
<b>AT-TQR-WEB-5YR</b>	UTM Web Categorization license for 5 years	■ Web Categorization (OpenText)

## ORDERING INFORMATION

<b>AT-TQ7403-R-xx</b>	Enterprise-Class Wi-Fi 6E Wireless AP Router with 3 radios (2x2 2.4GHz and 2x2 5GHz and 2x2 6GHz), an embedded and external antenna, and 2 multi-gigabit Ethernet ports
-----------------------	---

Where xx = 05 Regulatory Domain: Other countries<sup>3</sup>  
 02 Regulatory Domain: Taiwan  
 01 Regulatory Domain: United States Reserved  
 00 Regulatory Domain: EMEA

<sup>3</sup> Please check the Compliance section on page 4 to see which countries are certified to use these access points.

### Related Products

<b>AT-TQ0301</b>	Patch antenna for 2.4G/5G, one required per TQ7403-R
<b>AT-TQ0064</b>	Antenna extension cable of 10 m. At least two units required per TQ7403-R
<b>AT-PWRADP-01</b>	AC adapter
<b>AT-6101GP-yy</b>	Gigabit Ethernet PoE+ (802.3at) injector
<b>AT-7101GHTm-yy</b>	Multi-Gigabit Ethernet PoE++ (802.3bt) injector
<b>AT-BRKT-CONV-AP1</b>	Replacement <a href="#">bracket converter</a>

Where yy = 10 for US power cord  
 30 for UK power cord  
 40 for Australian power cord  
 50 for European power cord